



Certificate of Analysis

Company: Moon Water Farms of Vermont **Sample ID:** S-00000087-001 -001

103 Scandore Dr
North Hero, VT 05474

Lot: N/A

Report Date: 11/10/2022

Matrix: Flower

Date Analyzed: 11/8/2022

Customer ID: 221019-2

Date Sampled: N/A

Analyst: 035

Grower License #: S-00000087

Date Received: 10/19/2022

Report ID: C221019AP

Terpenes Summary

Terpene	LOQ (mg/g)	Results (mg/g)	Weight (%)
α - Pinene	0.010	1.564	0.156
Camphene	0.010	0.181	0.018
β -Myrcene	0.010	1.561	0.156
b-Pinene	0.010	1.407	0.141
3-Carene	0.010	<LOQ	<LOQ
α -Terpinene	0.010	<LOQ	<LOQ
Limonene	0.010	3.591	0.359
p-Cymene	0.010	<LOQ	<LOQ
Ocimene	0.010	<LOQ	<LOQ
Eucalyptol	0.010	0.031	0.003
γ -Terpinene	0.010	0.014	0.001
Terpinolene	0.010	0.089	0.009
Linalool	0.010	0.560	0.056
Isopulegol	0.010	0.634	0.063
Geraniol	0.010	<LOQ	<LOQ
Caryophyllene	0.010	2.599	0.260
α -Humulene	0.010	0.794	0.079
Trans-Nerolidol	0.010	<LOQ	<LOQ
Cis-Nerolidol	0.010	<LOQ	<LOQ
Guaiol	0.010	<LOQ	<LOQ
Caryophyllene Oxide	0.010	<LOQ	<LOQ
α -Bisabolol	0.010	0.012	0.001
Total Terpenes		13.037	1.302

11.90%
Percent Moisture

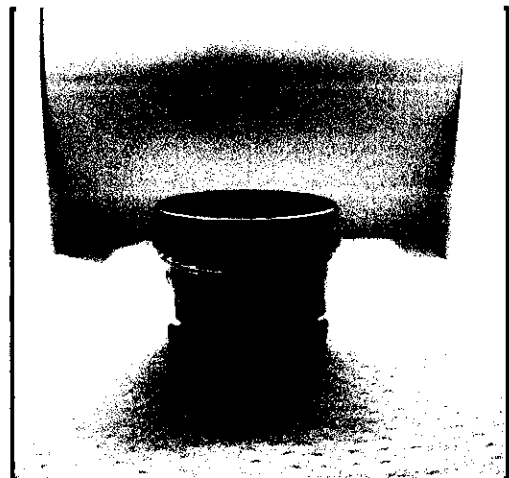
LOQ = The lowest quantity this method can reliably detect. Any terpene that was not detected is assumed to be less than the stated LOQ (<LOQ).

Terpene Methodology: Headspace Sampler, Gas Chromatography-Mass Spectrometry (GC-MS), using Perkin Elmer Clarus® SQ8 GC MS

Reagent Blanks: < LOQs for all analytes

All results reflect dry weight of material, based on % moisture of the sample.

All moisture analysis is determined by loss-on-drying measurement using OHAUS Model MB90 Moisture Content Readers.



This report shall not be reproduced except in full without approval of the laboratory. This is to provide assurance that parts of a report are not taken out of context. Results apply to the samples as received.

Certified by: Luke E. M.
Luke Emerson Mason (Laboratory Director, Bia Diagnostics)